



## **WELCOME!**

Dear 2021 Summit attendees,

Welcome to the 9th Annual Becoming Baby-Friendly in Oklahoma Summit. We are thrilled that you chose to attend our first virtual Summit! Our team has worked hard to make this opportunity a reality and we are excited to see what other changes are in store for future Summits. We thank today's speakers, panelists and especially our Nurse Planner, Barbara Koop, MSN, RNC-OB, Project Manager for OPQIC for making this year's Summit possible.

It is our goal to provide as much of the in-person Summit experience to Zoom. Historically we would have an area where one could talk to and obtain information about our partnering organizations. To help continue that distribution of information, we had our partnering organizations create a short video describing what they have to offer you and your patients. These videos will be played throughout the day and the links to these videos are located after the biographies section in this packet. To help promote networking, we have included links to the various social media accounts for OBRC, our presenters and our partners. We hope that you find this experience enjoyable and beneficial.

*thank  
you*

Jaclyn Huxford, IBCLC  
Assistant Director, Oklahoma Breastfeeding Resource Center

# AGENDA

## MORNING

08:30a - 09:15a \* The State of the State : Becky Mannel, MPH, IBCLC, FILCA  
09:15a - 09:25a \* Baby-Friendly Hospital Recognition Ceremony  
09:25a - 09:30a \* *Break*  
09:30a - 09:35a \* Video: Community/State Partners in OK - COBA & WIC  
09:35a - 10:35a \* A Mother-centric Approach: Part 1 : Jane Morton, MD  
10:35a - 10:45a \* *Break*  
10:45a - 10:50a \* Video: Community/State Partners in OK - OSDH  
10:50a - 11:35a \* A Mother-centric Approach Part 2a : Jane Morton, MD  
11:35a - 11:40a \* *Break*  
11:40a - 12:10p \* A Mother-centric Approach Part 2b : Jane Morton, MD

## LUNCH BREAK

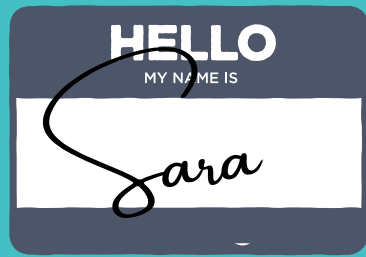
12:10p - 12:55p

## AFTERNOON

12:40p - 12:50p \* (optional) Behind the Curtain: How the Hotline Sends Texts  
12:55p - 01:00p \* Video: Community Partners - OPQIC & Black History Month Videos  
01:00p - 01:45p \* Panel - Health Disparities: Impact on Breastfeeding  
01:45p - 01:55p \* *Break*  
01:55p - 02:00p \* Video: Community/State Partners in OK - OMMB  
02:00p - 02:45p \* Perinatal/Infant Loss & Lactation : Cheryl Coleman, BSN, IBCLC  
02:45p - 03:15p \* Panel - Mothers' Stories: Support is Critical  
03:15p - 03:20p \* *Break*  
03:20p - 03:25p \* Video: Community/State Partners in OK - Hotline & OUP Clinic  
03:25p - 04:25p \* Maternal Mental Health & Breastfeeding : James Craig, LCSW  
04:25p - 04:30p \* Dismiss

The above is a condensed list of the events for the day.

[Please click here to see the full agenda.](#)



## New to Zoom?

Dear 2021 Summit attendees,

As we continue down this new world where virtual events are the norm, I'd like to share a few common virtual courtesies to keep in mind. **1)** after being admitted into the call, check that your mic is muted, **2)** when typing in the chat box, please do not use all capital lettering (this represents shouting), and **3)** if possible, turn on your video during the presentations. Speakers often find it comforting when they can see faces and expressions as they give their presentations. If you would like a quick review of the 4 Zoom capabilities listed below, [click to watch my video "A few things to know."](#)

1. Enabling/Disabling your mic and video
2. Using the chat box
3. Enlarging the shared presentation
4. Speaker view vs. gallery view

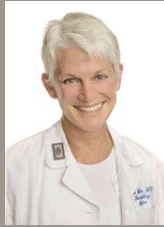
*thank  
you*

Sara Bellatti, MS  
Office Administrator, Oklahoma Breastfeeding Resource Center

# SPEAKERS



Becky Mannel  
MPH, IBCLC, FILCA



Jane Morton, MD  
Founder, Droplets



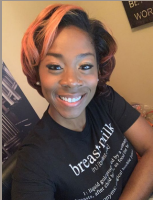
Cheryl Coleman  
RN, BSN, IBCLC



James Craig  
LCSW

## PANEL

### Systemic Racism & Health Disparities in Oklahoma: Impact on Breastfeeding



Jillian Bray  
Better Black News



Noor Jihan Abdul-Haqq, MD  
Peace of Mind Pediatrics



Maggie Green, LCSW  
GreenwerCs Coaching,  
Counseling, Consulting



JP Profit, RN, BSN  
CNO, Hillcrest Hospital -  
Cushing

## PANEL

### Mothers' Stories: Support is Critical



Elizabeth Ouk  
Senior Administrator,  
OPQIC



Rachel Nelson  
Lab Technician,  
Oklahoma Mothers' Milk Bank



Sarah Johnson  
Maternal Health  
Peer Navigator,  
OPQIC



## **Becoming Baby-Friendly in Oklahoma** **(BBFOK)**

Dear 2021 Summit attendees,

BBFOK is a statewide effort to help hospitals improve maternity care and increase the number of Baby-Friendly hospitals in Oklahoma. The Baby-Friendly Hospital Initiative (BFHI) is a global program that recognizes hospitals and birthing centers that offer an optimal level of care and best practices for infant feeding and mother/baby bonding. Hospitals may enroll in BBFOK at any time to start on their Baby-Friendly journey.

Upon commitment to the BBFOK project, participating hospitals will begin a 2-3 year learning collaborative to achieve Baby-Friendly designation. Participating hospitals will implement evidence-based quality improvement methods (such as the 10 Steps to Successful Breastfeeding) and work with state breastfeeding and quality improvement experts. These experts will provide private assistance to you and your team as well as hosting regular educational/networking webinars to help prepare your facility and team for designation.

BBFOK project support includes: reimbursement of the majority of the fees required by Baby-Friendly USA (up to \$9500), education stipends for online staff training sessions, ongoing technical support to facilitate policy development/revision, staff/physician education, site visits, and mock surveys prior to any BFHI assessments. To enroll your hospital or for more information, contact OBRC at [obrc@ouhsc.edu](mailto:obrc@ouhsc.edu) or [click here](#) to be directed to our BBFOK webpage.

Becky Mannel, MPH, IBCLC, FILCA  
Director, Oklahoma Breastfeeding Resource Center

# **The 10 Steps to Successful Breastfeeding**

There is substantial evidence that implementing the Ten Steps significantly improves breastfeeding rates. A systematic review of 58 studies on maternity and newborn care demonstrated clearly that adherence to the Ten Steps impacts early initiation of breastfeeding immediately after birth, exclusive breastfeeding and total duration of breastfeeding.

1. Have a written infant feeding policy that is routinely communicated to staff and parents.
2. Ensure that staff have sufficient knowledge, competence and skills to support breastfeeding.
3. Discuss the importance and management of breastfeeding with pregnant women and their families.
4. Facilitate immediate and uninterrupted skin-to-skin contact and support mothers to initiate breastfeeding as soon as possible after birth.
5. Support mothers to initiate and maintain breastfeeding and manage common difficulties.
6. Do not provide breastfed newborns any food or fluids other than breast milk, unless medically indicated.
7. Enable mothers and their infants to remain together and to practice rooming-in 24 hours a day.
8. Support mothers to recognize and respond to their infants' cues for feeding.
9. Counsel mothers on the use and risks of feeding bottles, teats and pacifiers.
10. Coordinate discharge so that parents and their infants have timely access to ongoing support and care.

# Oklahoma Legislation

## 2021 Legislation

### **Senate Bill #121**

***Protect rights of lactating school employees.***

<http://www.oklegislature.gov/BillInfo.aspx?Bill=sb121&Session=2100>

### **Senate Bill #446**

***Medicaid coverage of prescribed breast pumps.***

<http://www.oklegislature.gov/BillInfo.aspx?Bill=SB446&Session=2100>

### **Senate Bill #469**

***Medicaid coverage of for medically necessary Pasteurized Donor Human Milk.***

<http://www.oklegislature.gov/BillInfo.aspx?Bill=sb469&Session=2100>

### **Senate Bill #611**

***Medicaid reimbursement incentive for births at Baby-Friendly designated hospitals.***

<http://www.oklegislature.gov/BillInfo.aspx?Bill=sb611&Session=2100>

## 2020 Legislation

### **Senate Bill #285**

***Protect rights of lactating employees.***

<http://www.oklegislature.gov/BillInfo.aspx?Bill=SB285&Session=2000>

### **Senate Bill #1823**

***Safe Sleep Act***

<http://www.oklegislature.gov/BillInfo.aspx?Bill=sb%201823&Session=2000>

**SB#1823 is open for comment. Voice your opinion by [clicking here](#).**

### **Senate Resolution**

Correctional facilities...should create ways to accommodate breastfeeding for inmates and provide breast pumps and breastfeeding support.



## Covid-19 & Human Milk

Dear 2021 Summit attendees,

I would like to take a moment to reiterate information regarding breastfeeding during the coronavirus pandemic. Please see the below list. Each item has a link to a social media post that you can share on your various platforms. Please help us spread the word to our Oklahoma breastfeeding families!

Click [here](#) for our Covid-19 page for more details and the latest updates.

1) Pregnant and breastfeeding people are encouraged to get the covid-19 vaccine.

- [Facebook post](#), [Instagram post](#)

2) Breastfeeding people who are Covid positive are encouraged to continue breastfeeding and practice good hygiene measures (face mask, when possible and washing hands before touching baby).

- [Facebook post](#), [Instagram post](#)

*thank  
you*

Amanda Parsons, RND, IBCLC

Assistant Director, Oklahoma Breastfeeding Resource Center





OKLAHOMA  
BREASTFEEDING  
RESOURCE CENTER

THANK  
YOU



Preparing  
for a  
Lifetime  
It's Everyone's Responsibility

Oklahoma State Department of Health



COALITION OF OKLAHOMA  
BREASTFEEDING ADVOCATES